

Sistema Socio Sanitario



Regione
Lombardia

ASST Lecco

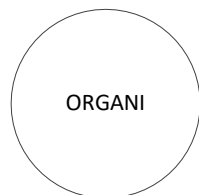
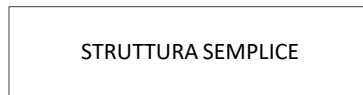
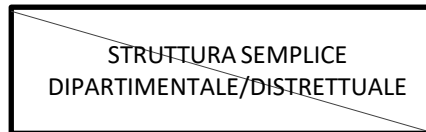
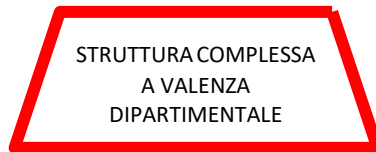
Piano di Organizzazione Aziendale Strategico

P.O.A.S. 2022 ORGANIGRAMMA

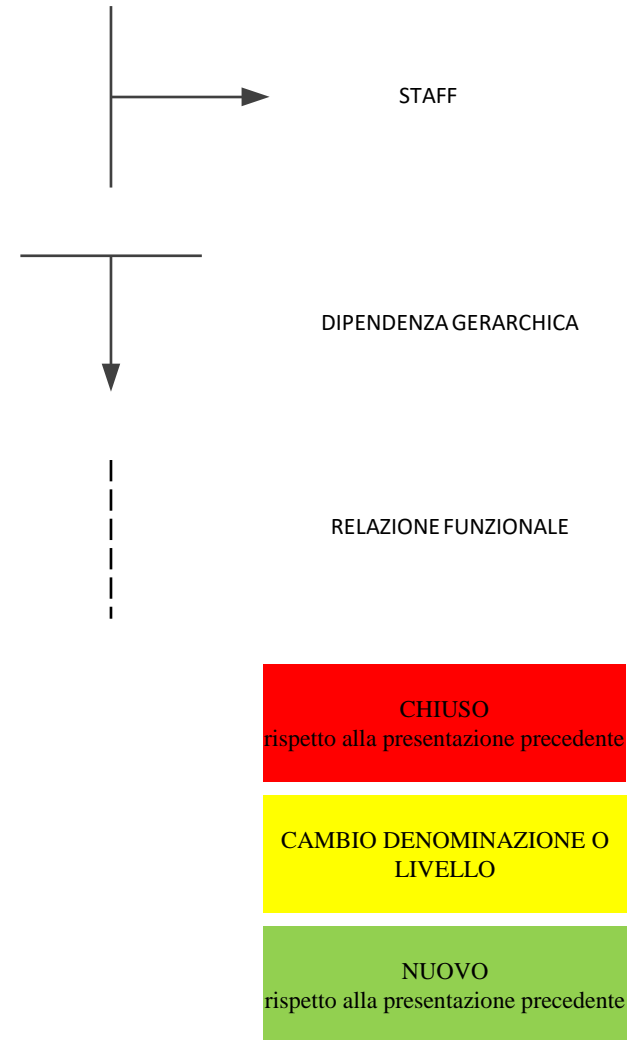
08/06/2022

LEGENDA

STRUTTURE



RELAZIONI

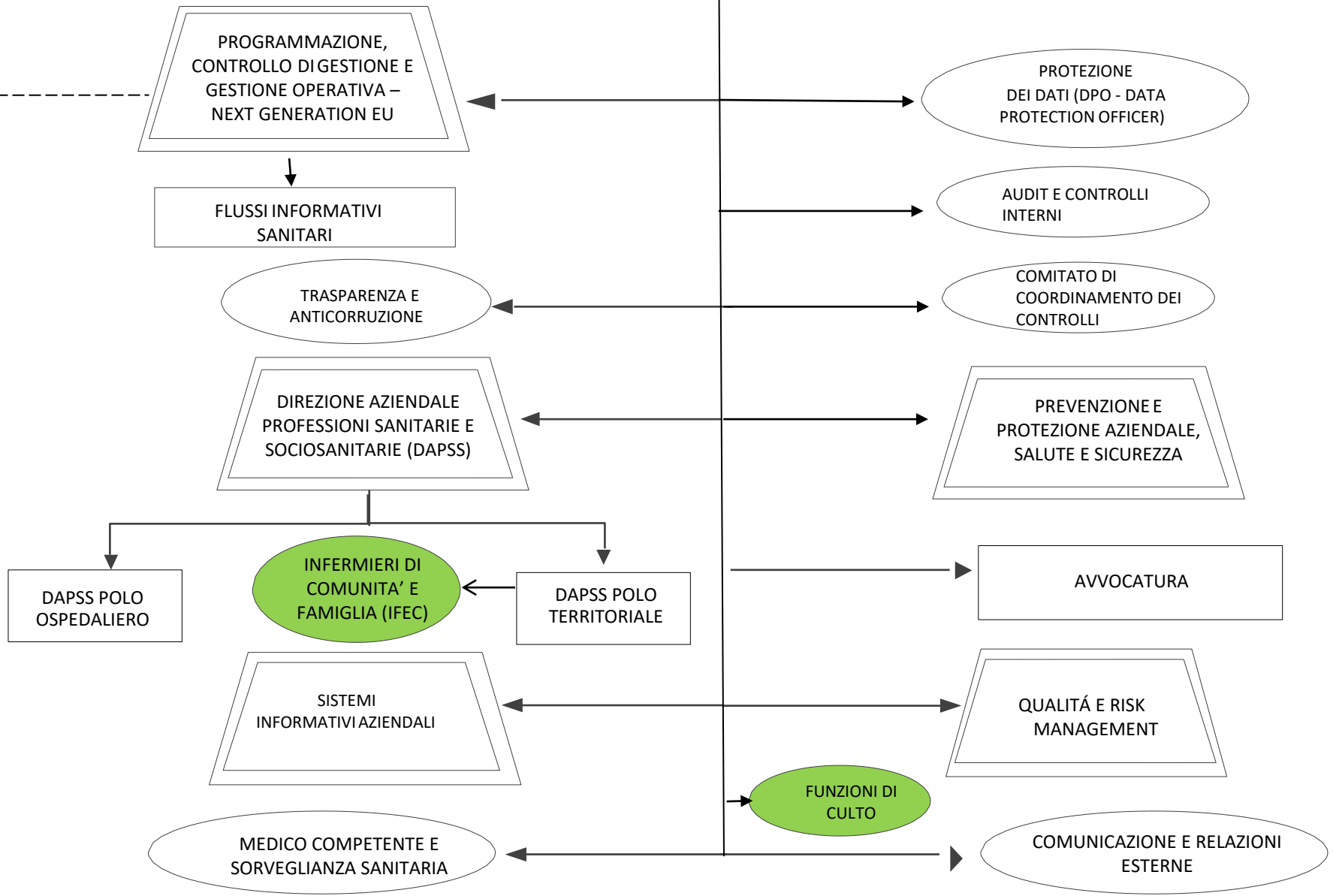


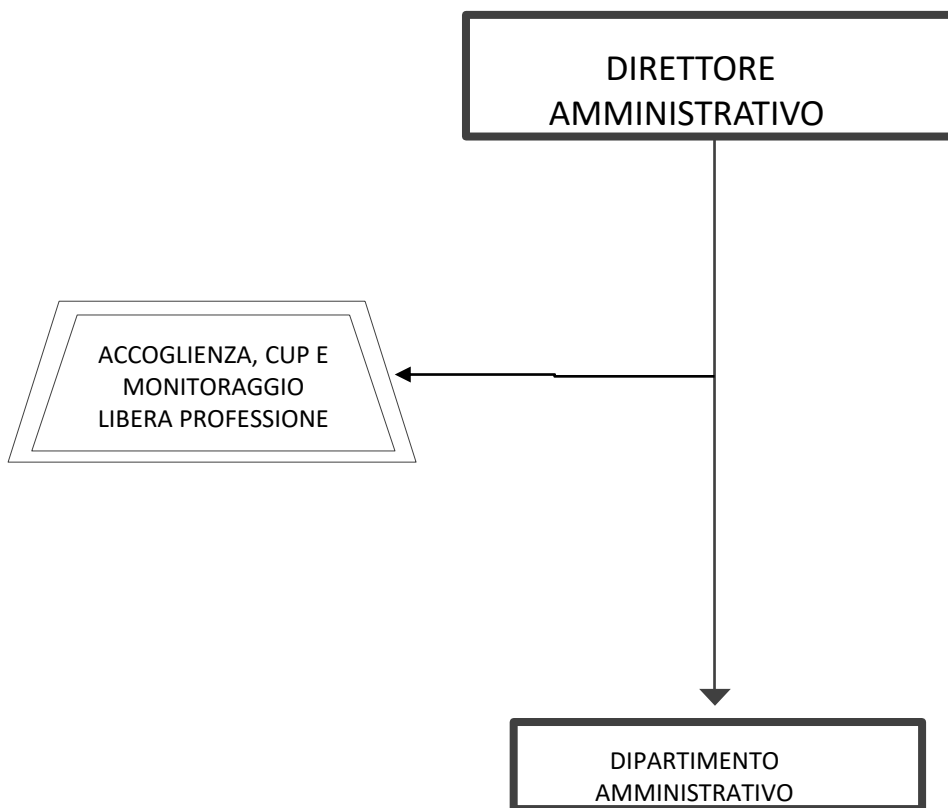


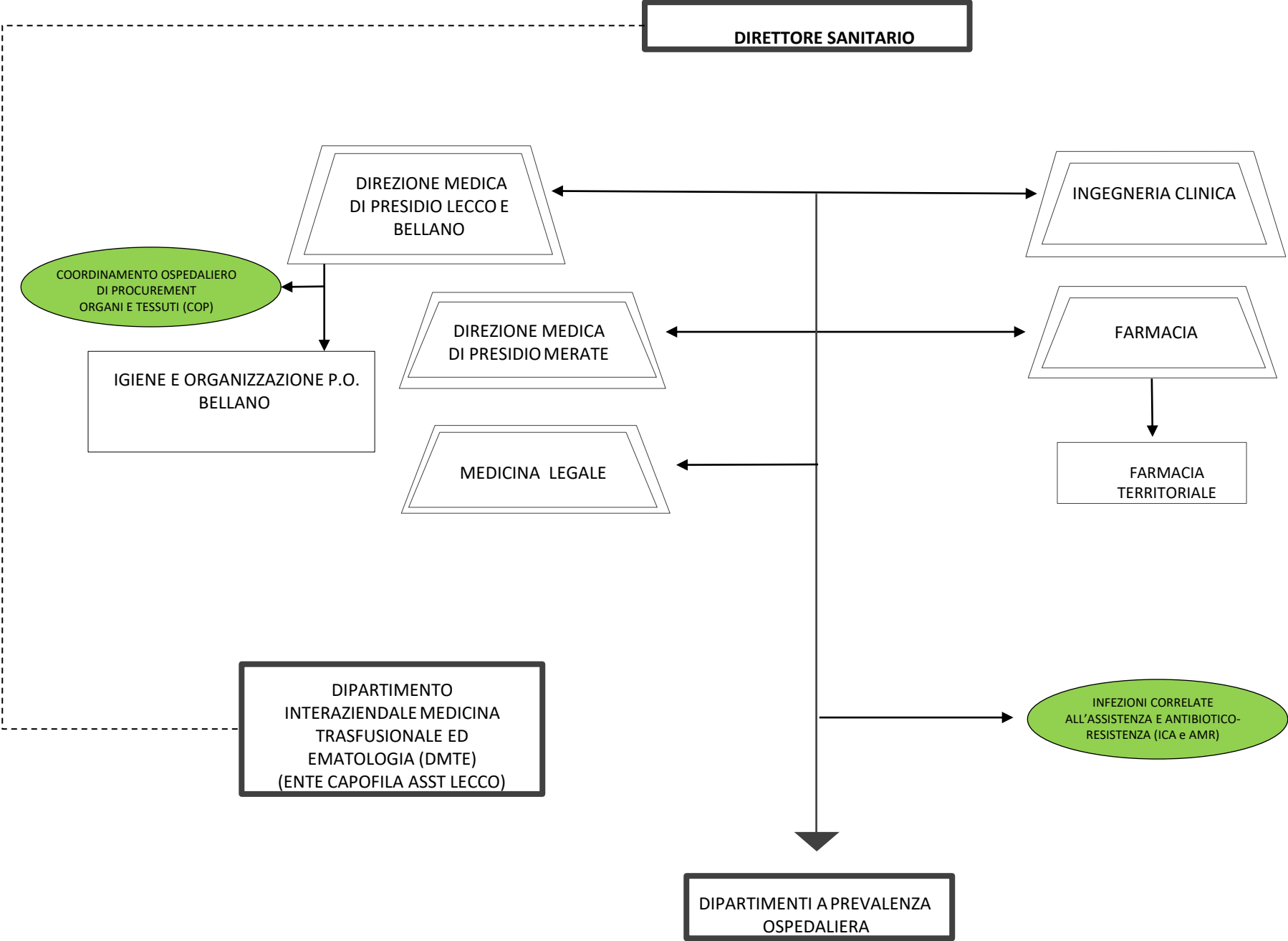
DIPARTIMENTO
INTERAZIENDALE RICERCA e
CURA ASST LECCO – ASST
BRIANZA-ASST MONZA

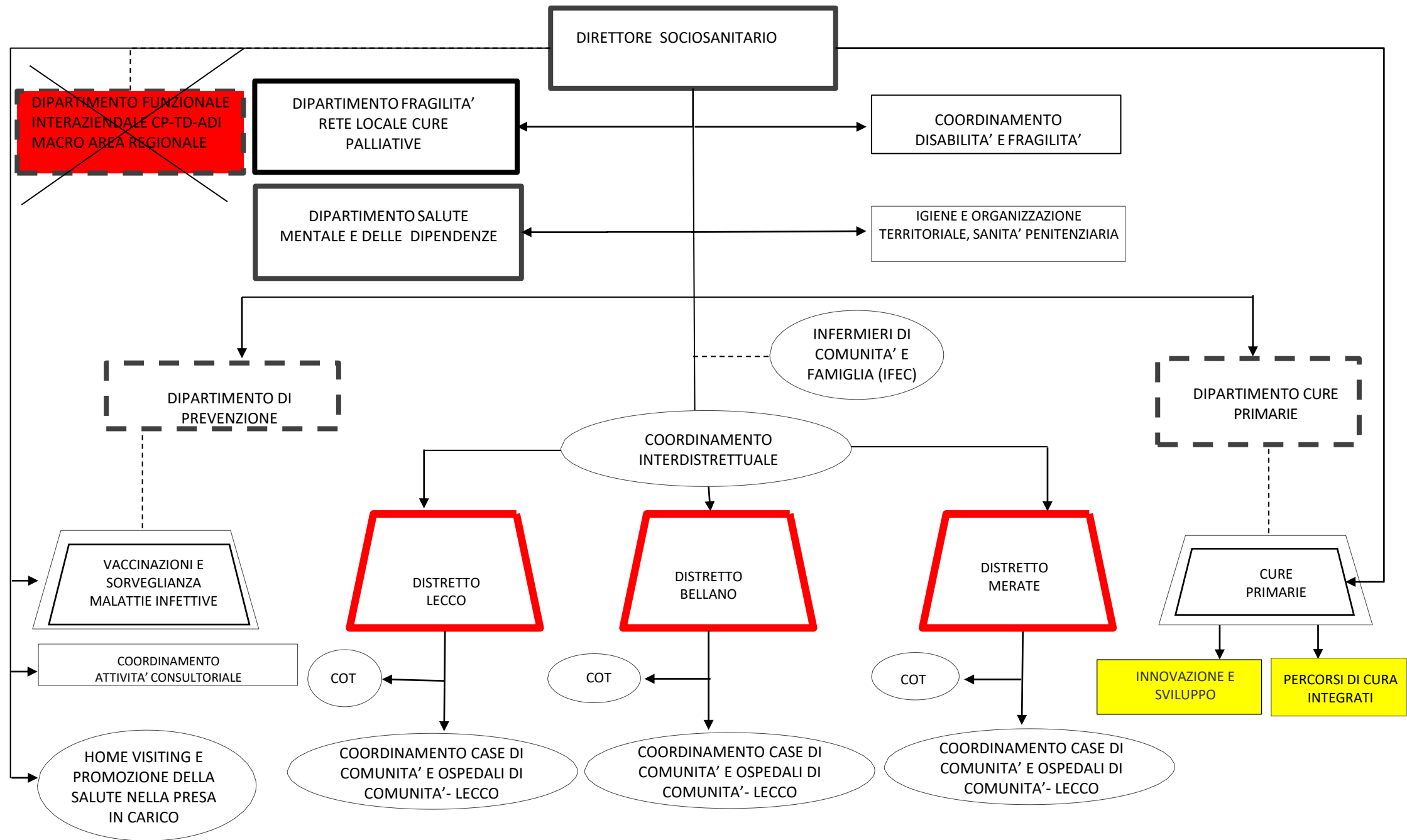
DIRETTORE GENERALE

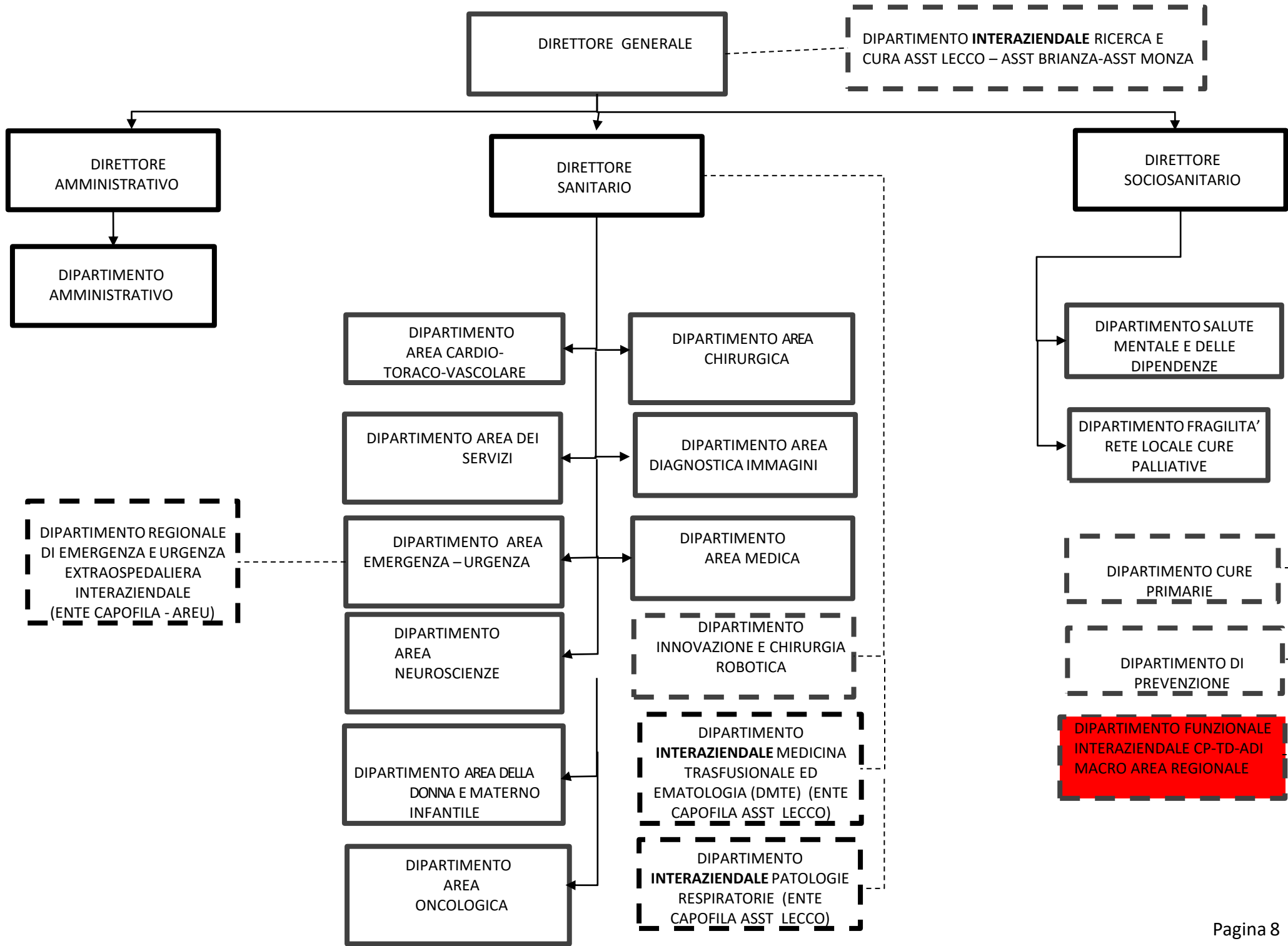
DIREZIONE GENERALE

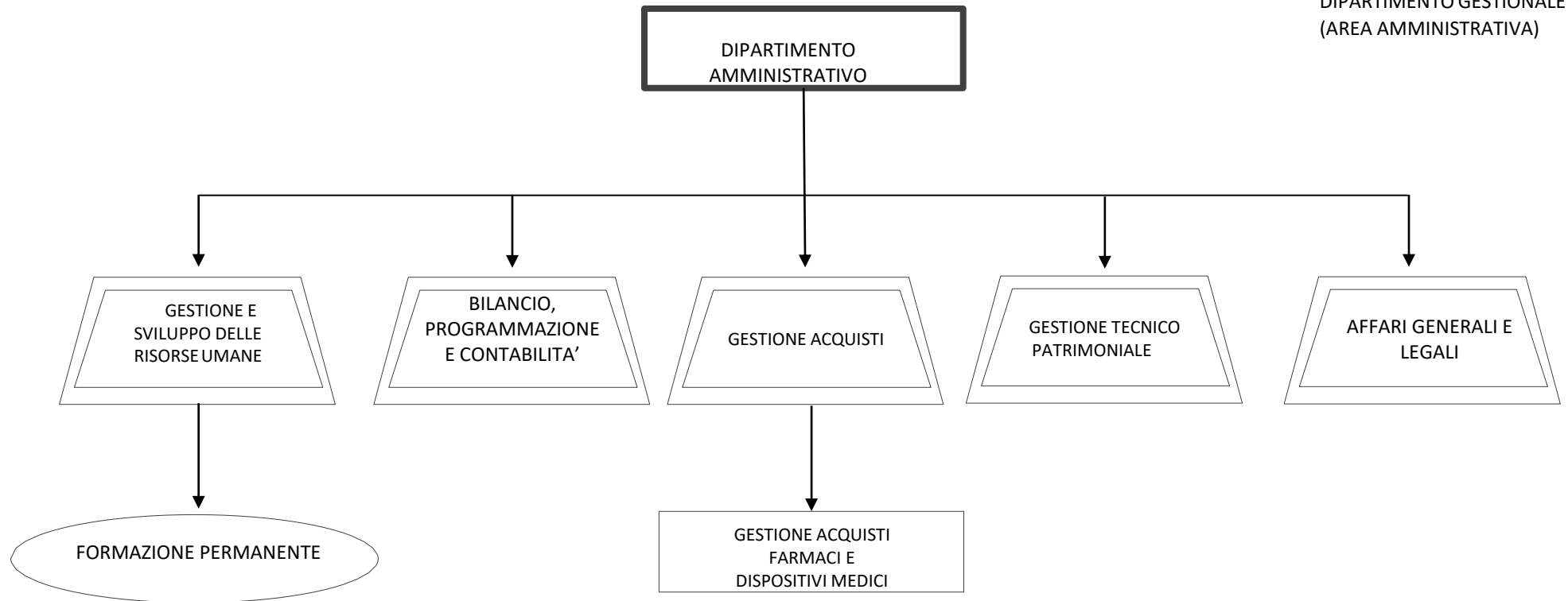


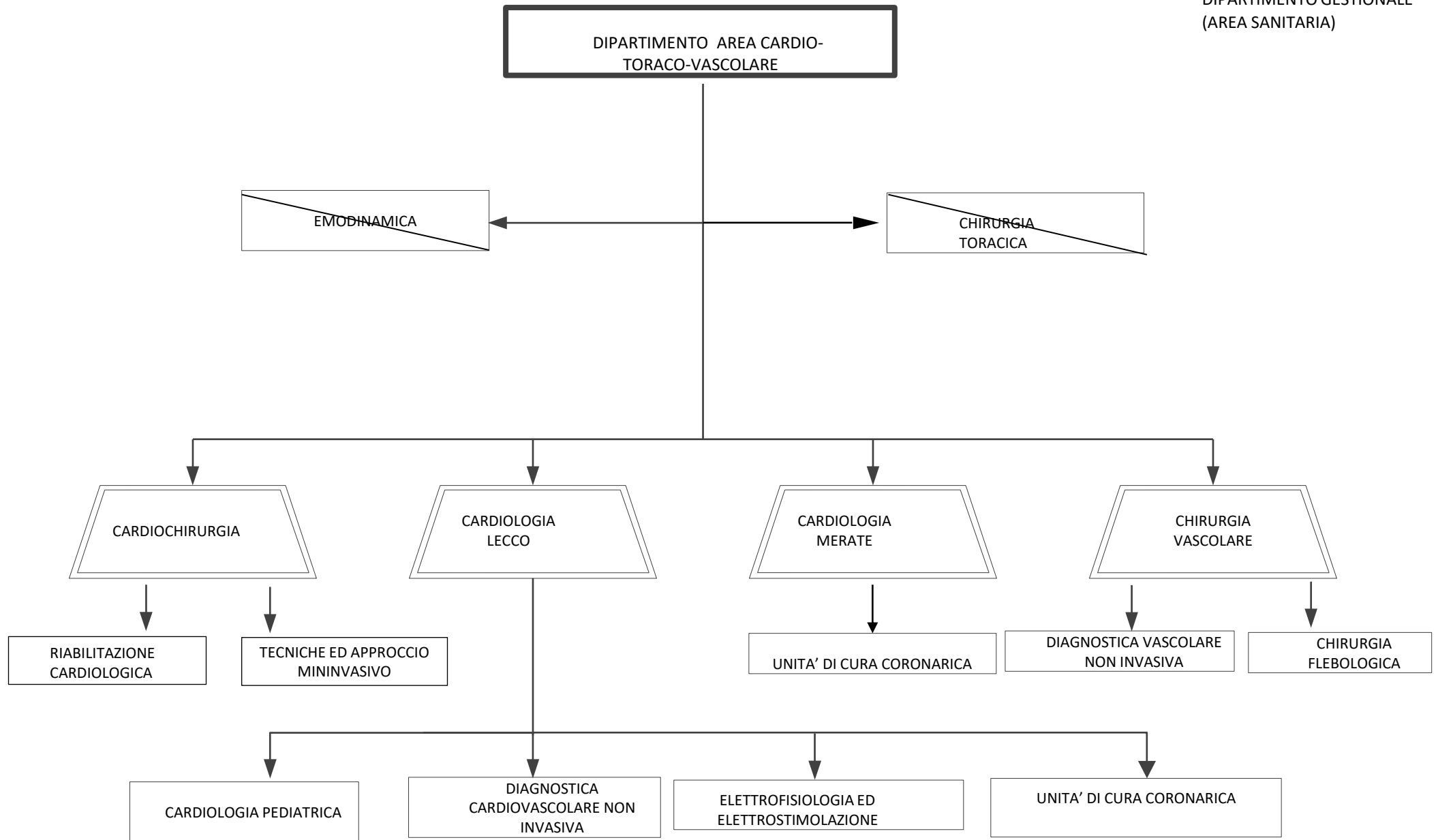




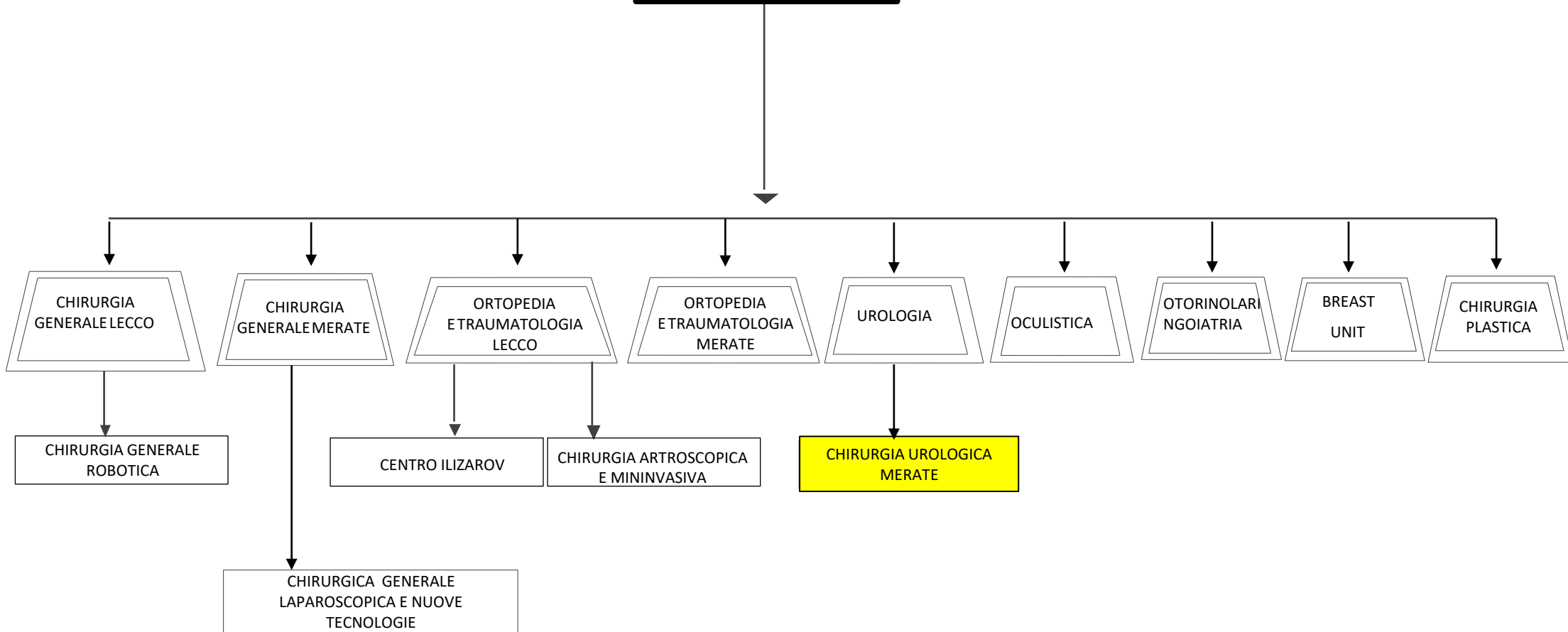


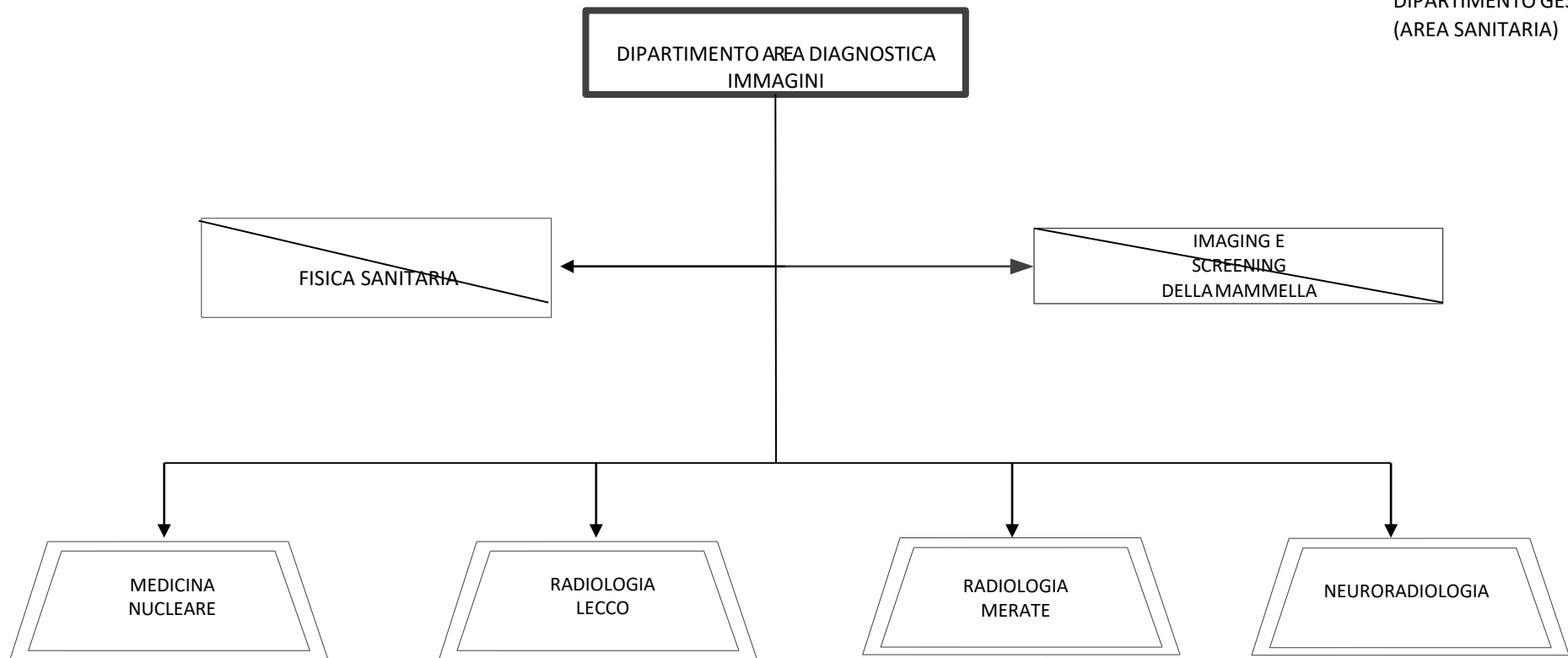






DIPARTIMENTO
AREACHIRURGICA

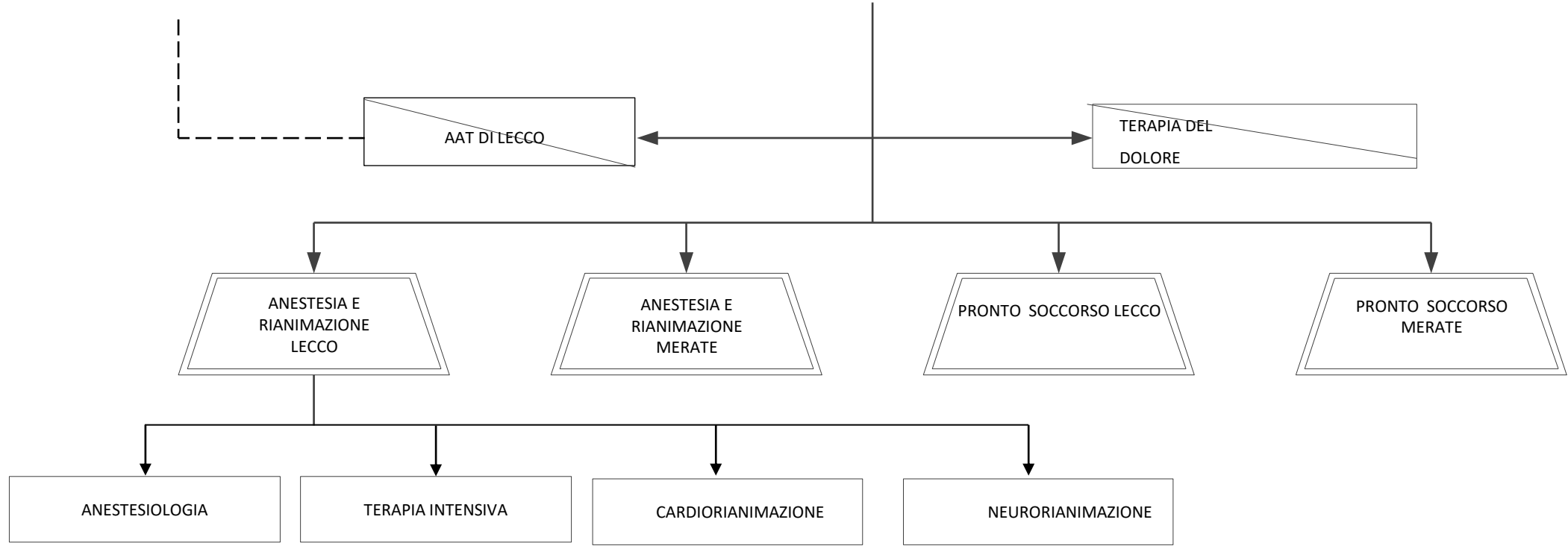




DIPARTIMENTO REGIONALE DI
EMERGENZA E URGENZA
EXTRAOSPEDALIERA
INTERAZIENDALE

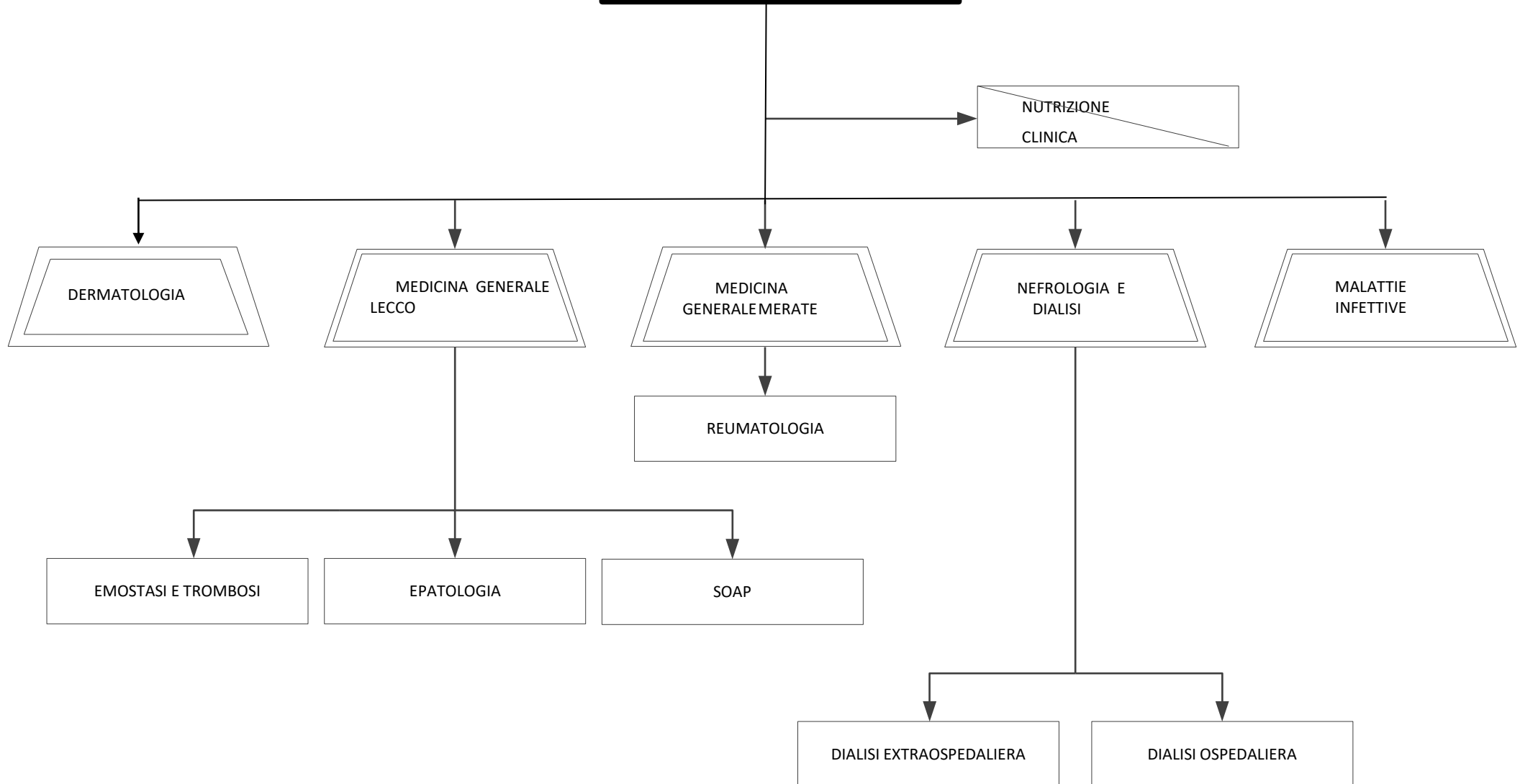
DIPARTIMENTO AREA
EMERGENZA - URGENZA

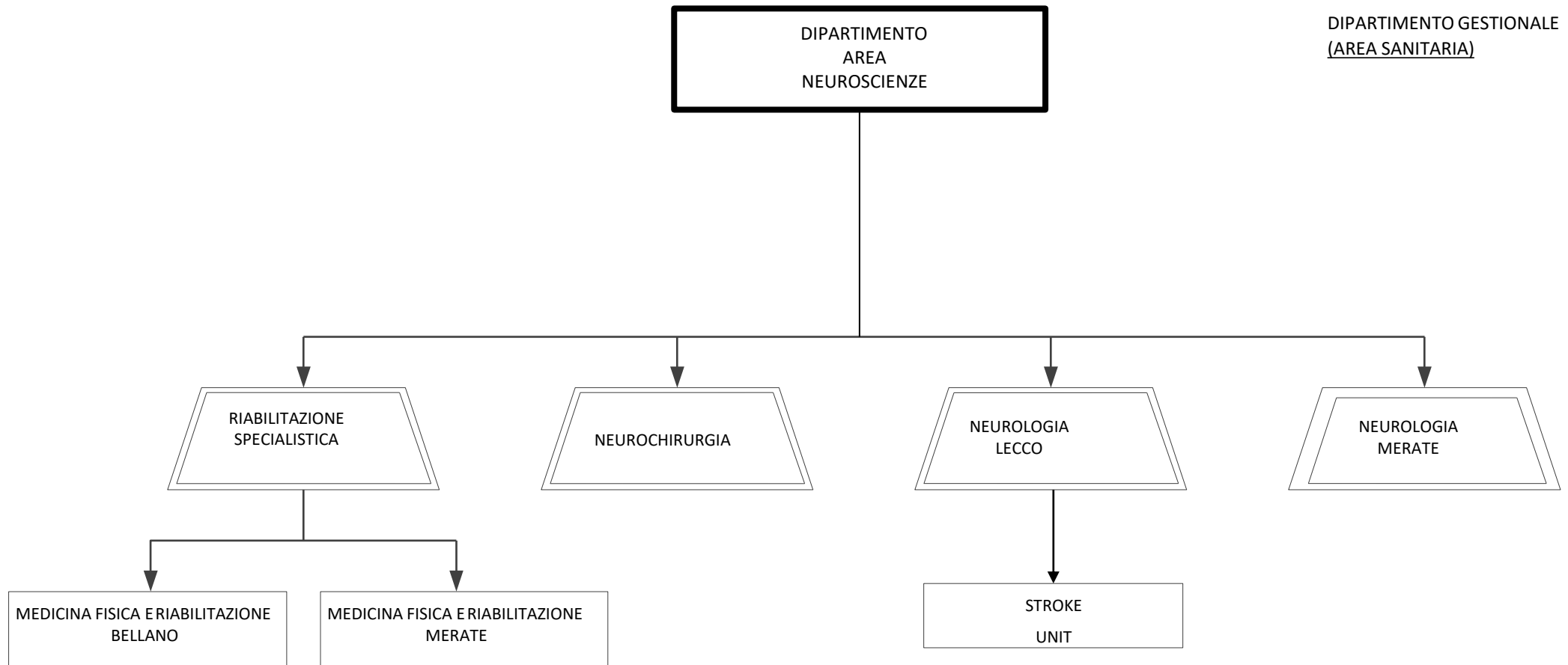
DIPARTIMENTO GESTIONALE
(AREA SANITARIA)

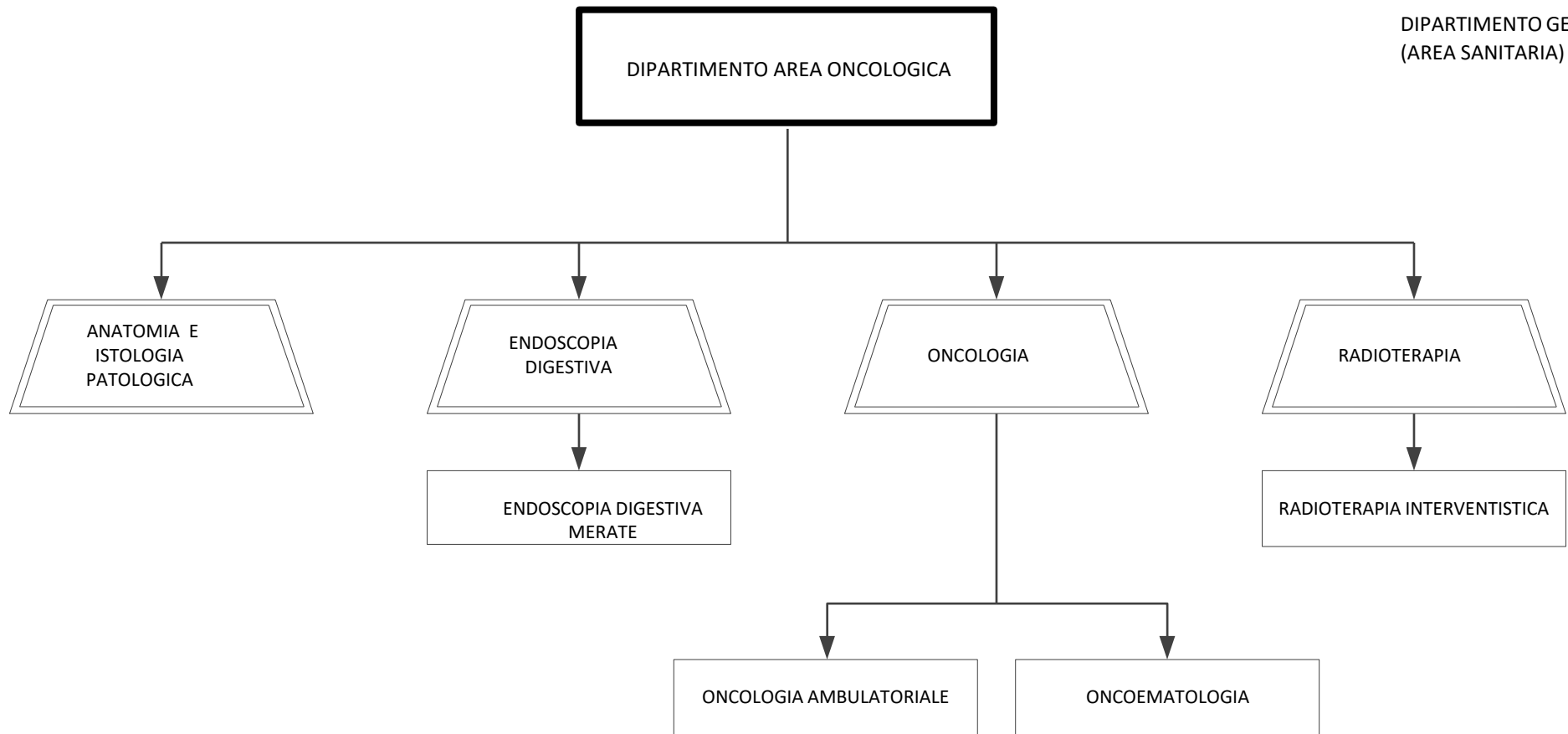


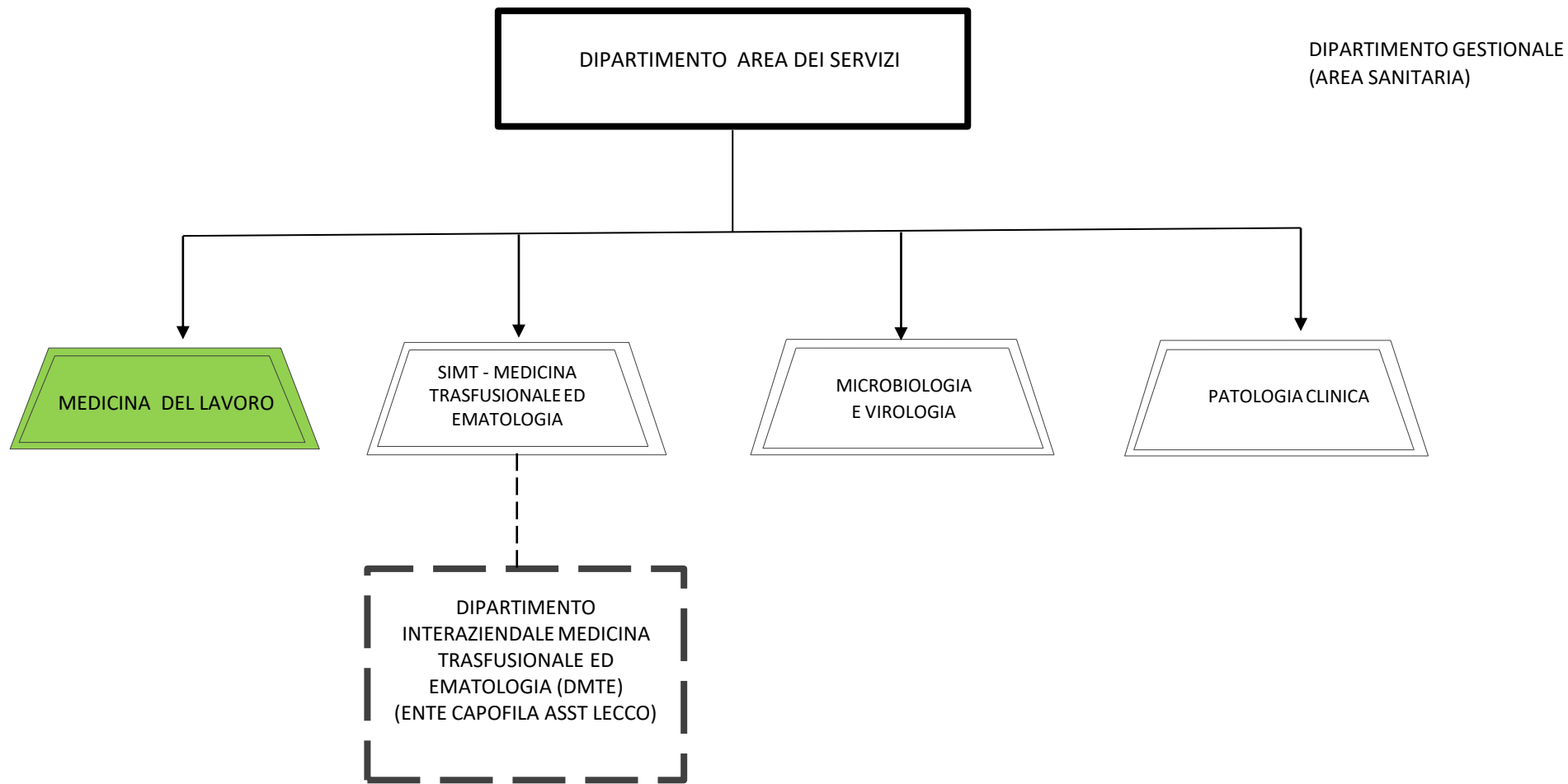
DIPARTIMENTO AREA MEDICA

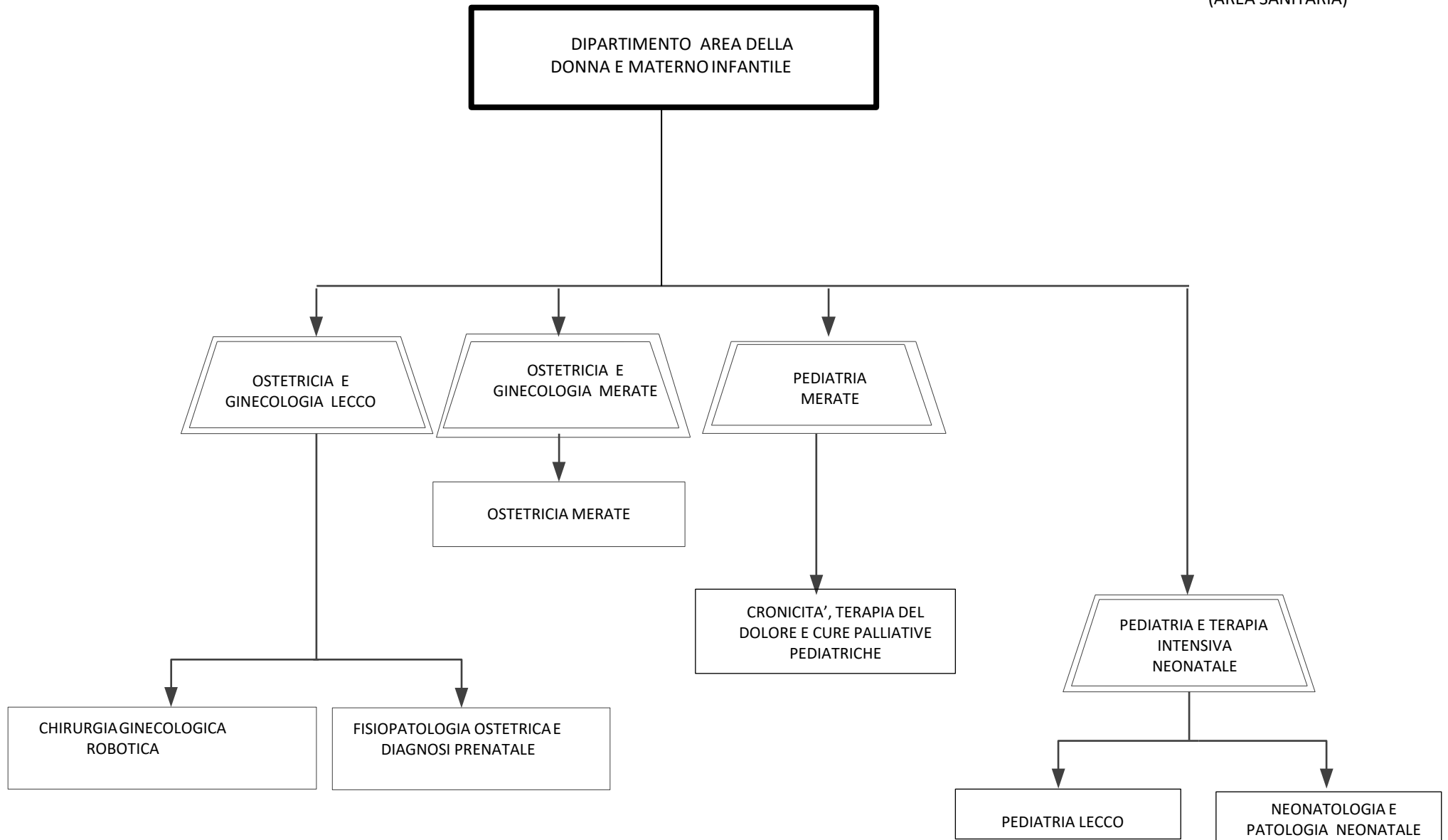
DIPARTIMENTO GESTIONALE
(AREA SANITARIA)

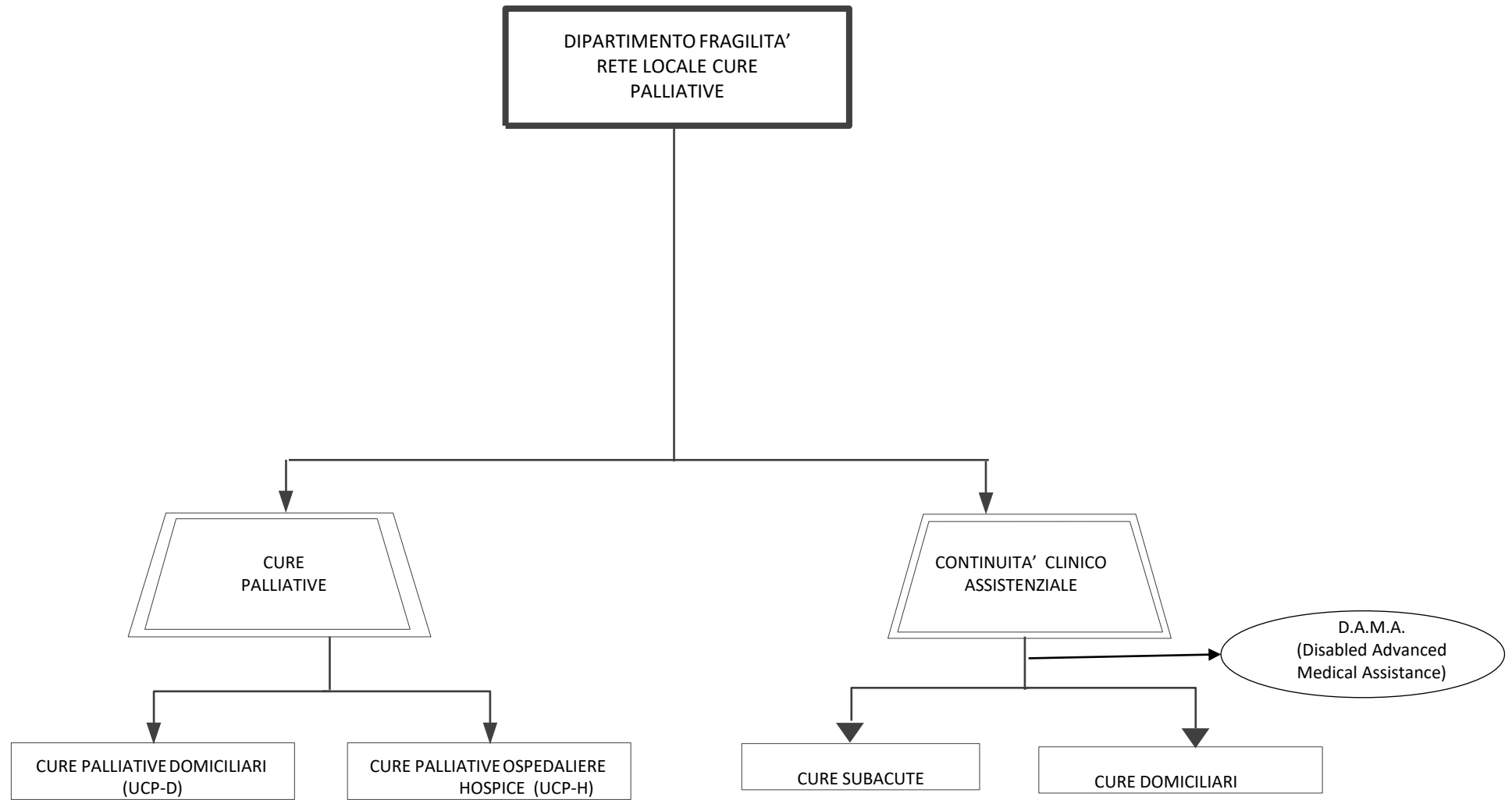


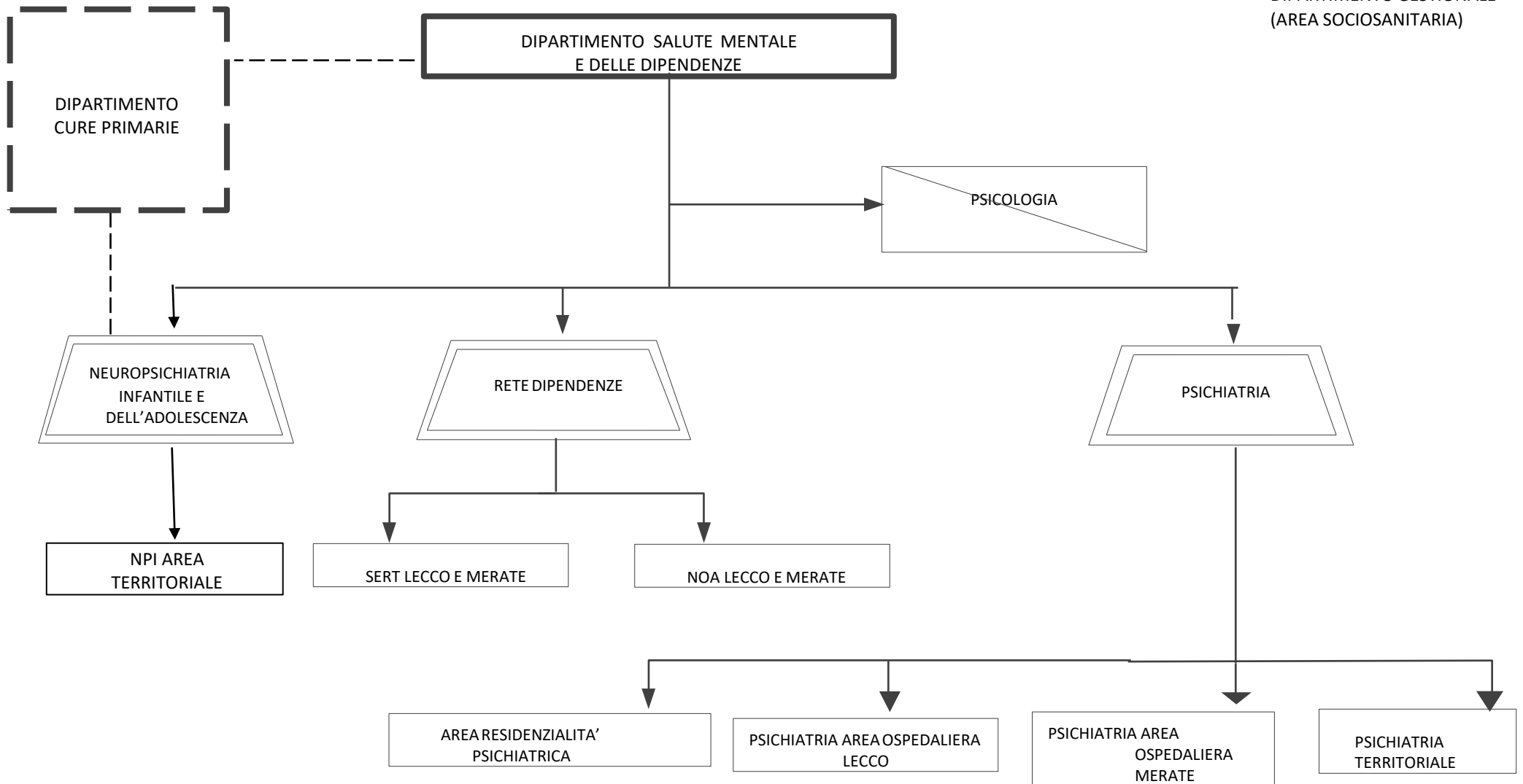






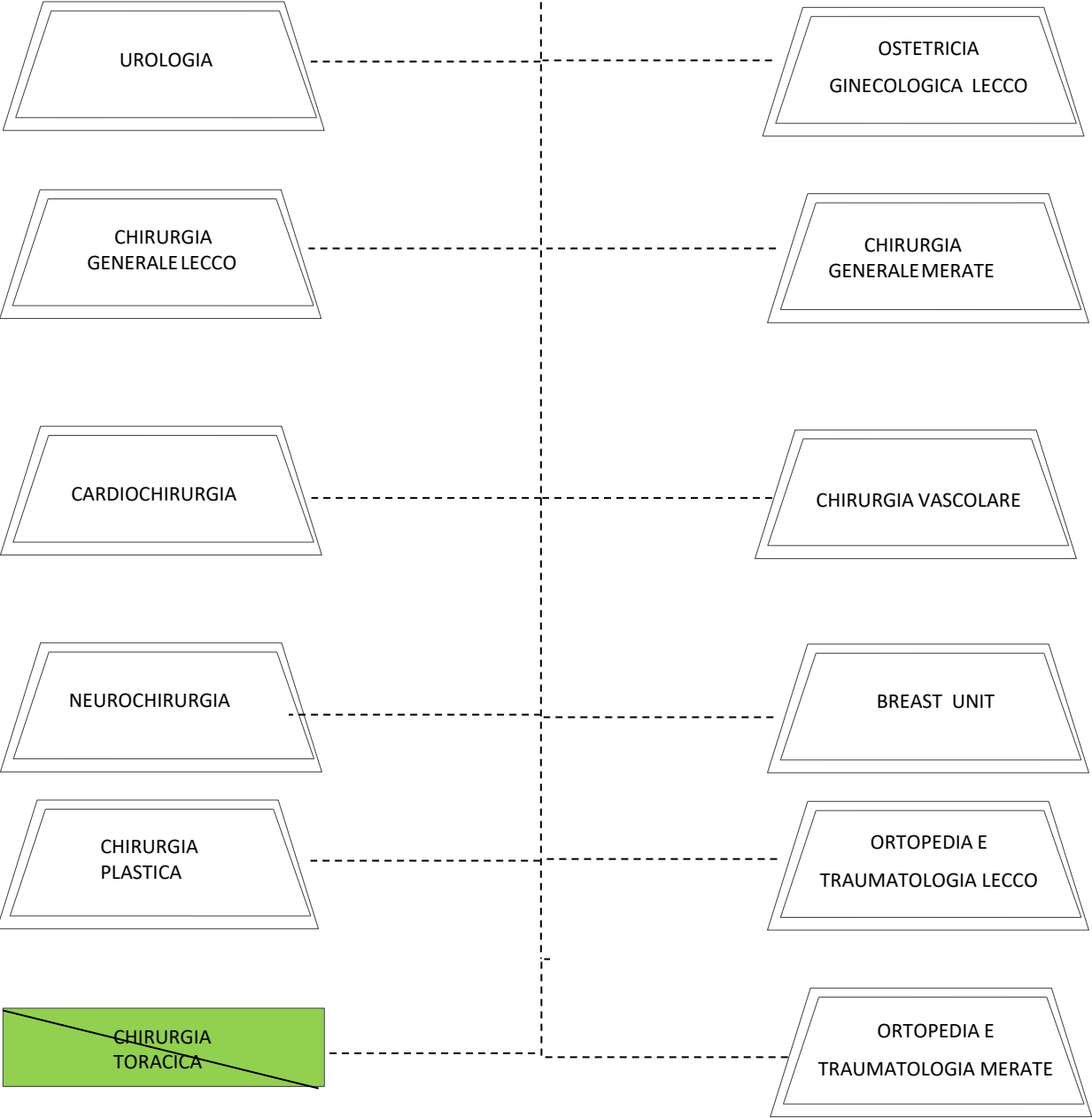


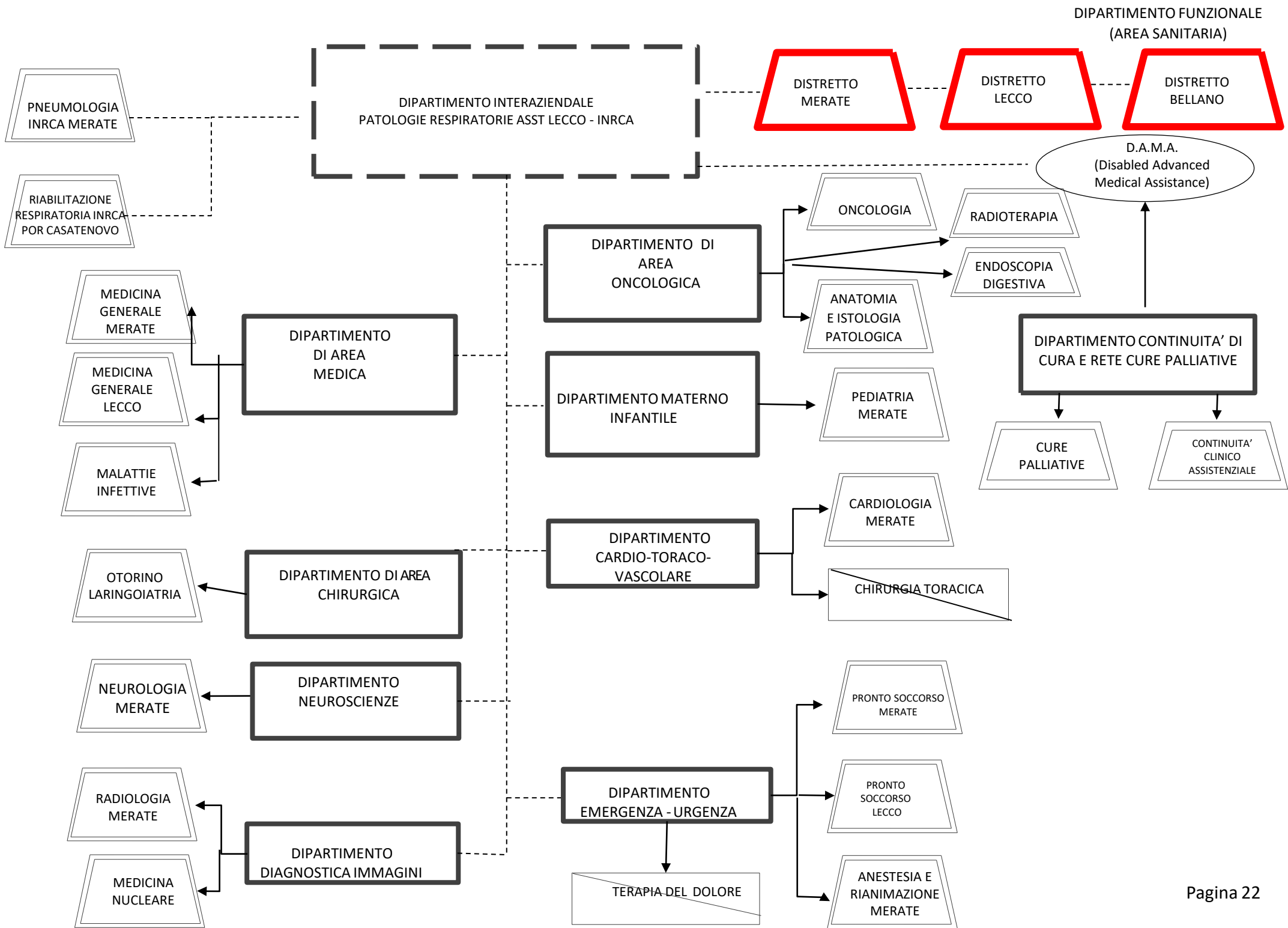


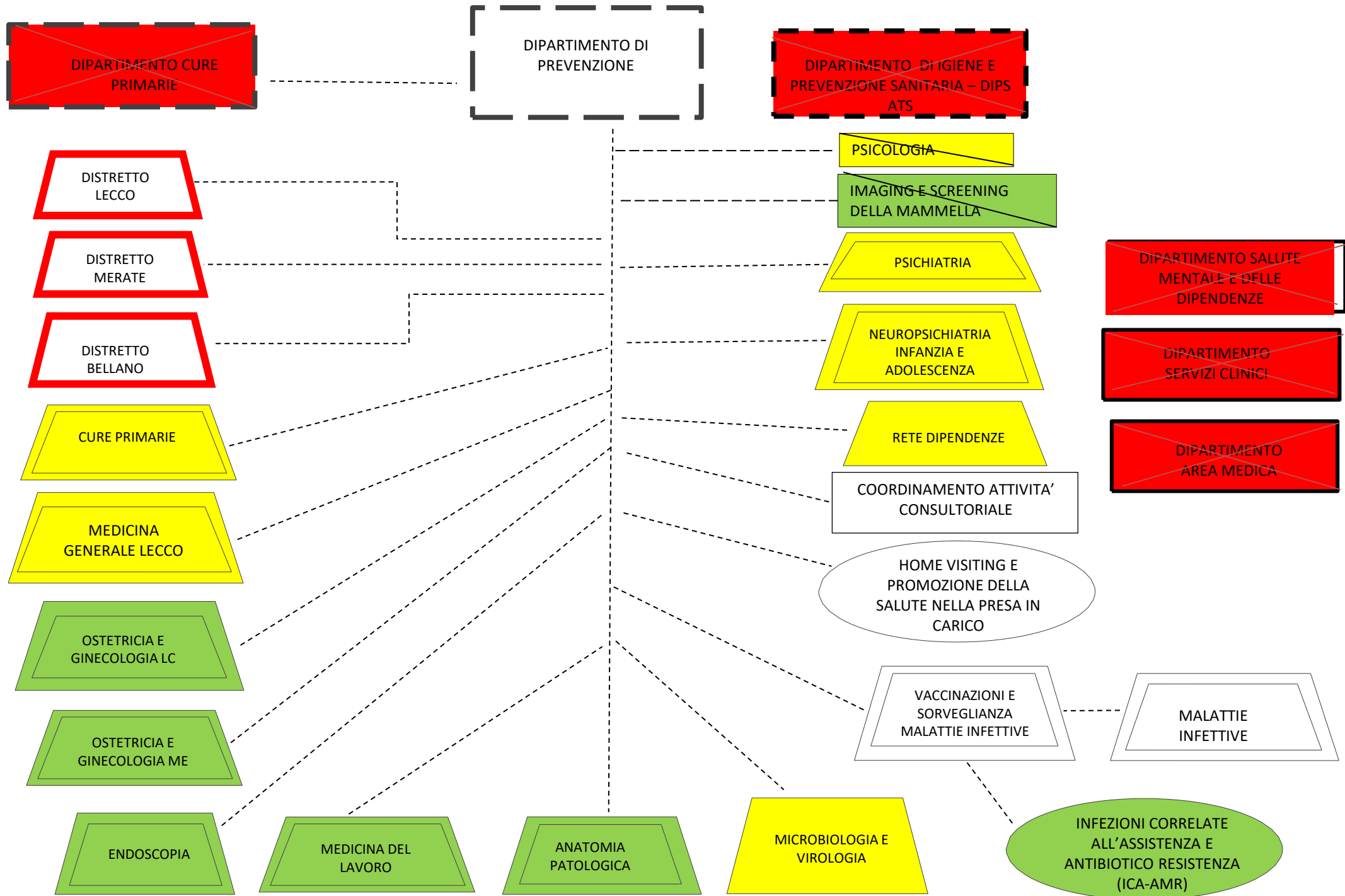


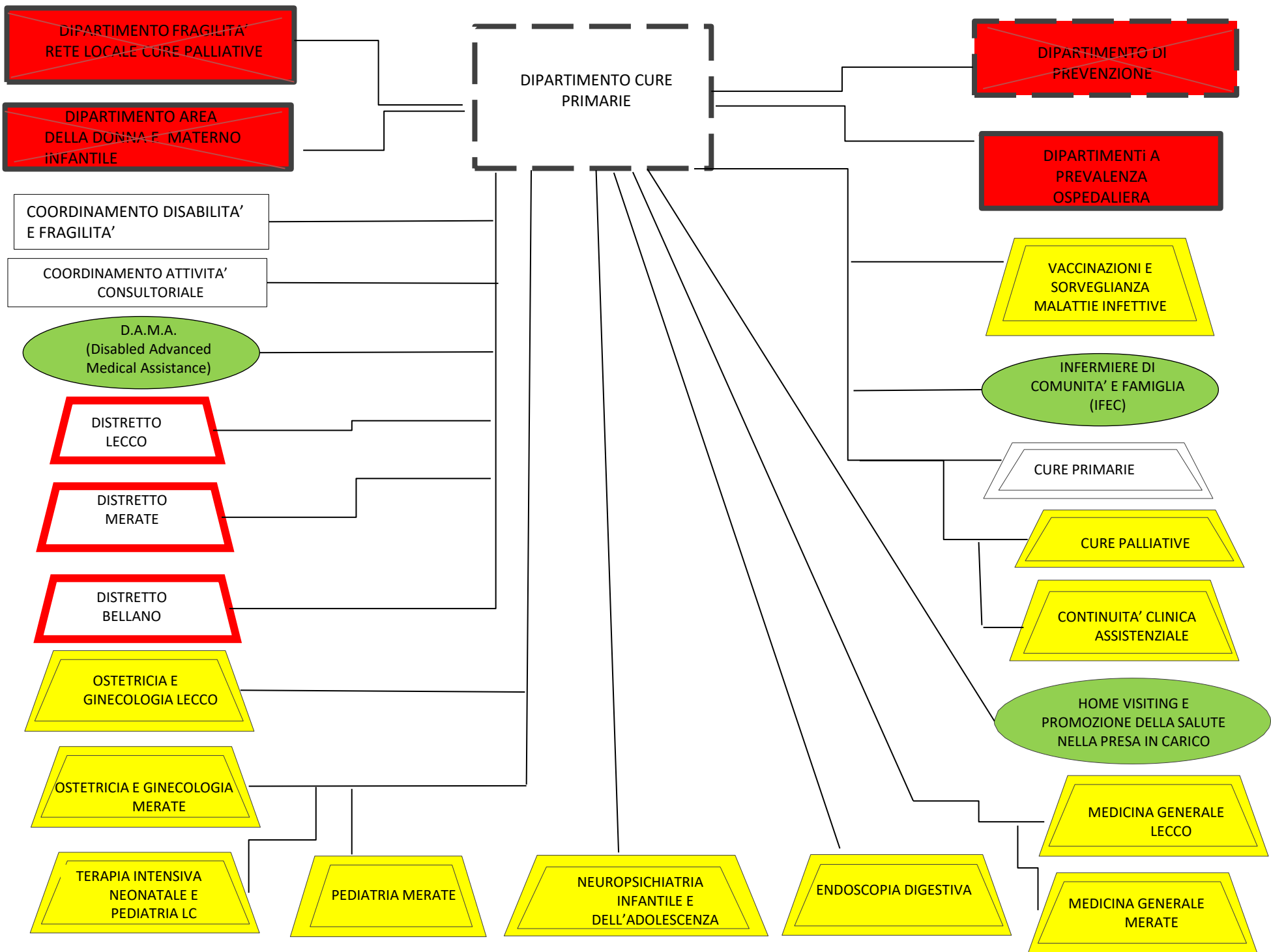
DIPARTIMENTO INNOVAZIONE E CHIRURGIA
ROBOTICA

DIPARTIMENTO FUNZIONALE
(AREA SANITARIA)









ASST Lecco

ASST Brianza

ASST Monza

SC
Programmazione,
controllo di gestione e
gestione operativa

SC
Controllo di Gestione

SC Gestione operativa
e dei percorsi di ricerca
e cura

Rete delle
neuroscienze

Dipartimento
Neuroscienze

Dipartimento
neuroscienze

Dipartimento
neuroscienze

Rete
cardiovascolare

Dipartimento cardio-
toraco-vascolare

Dipartimento cardio-
toraco-vascolare

Dipartimento cardio-
toraco-vascolare

Rete
materno infantile

Dipartimento Materno-
infantile

Dipartimento Area
della Donna e Materno
Infantile

SC Ginecologia
SC Ostetricia/Pediatria/TIN
(FMBBM)

Rete
NPI

SC NPI

SC NPI

SC Neuropsichiatria
infantile

Rete
Cure palliative

Dipartimento Fragilità
Rete Locale Cure Palliative

SC Cure Palliative

SS Cure Palliative e
Terapia del Dolore

